

CPSF73 Rabbit monoclonal antibody

Catalog: BS41389

Host: Rabbit

Reactivity: Human Mouse Rat

BackGround:

Component of the cleavage and polyadenylation specificity factor (CPSF) complex that play a key role in pre-mRNA 3'-end formation, recognizing the AAUAAA signal sequence and interacting with poly(A) polymerase and other factors to bring about cleavage and poly(A) addition.

Product:

Rabbit IgG, 1mg/ml in PBS with 0.02% sodium azide, 50% glycerol, pH7.2.

Molecular Weight:

77kDa

Swiss-Prot:

Q9UKF6

Purification&Purity:

Affinity-chromatography

Applications:

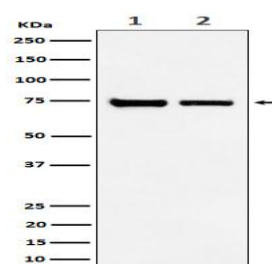
WB 1:500~1:2000 ICC/IF 1:50~1:200 FC 1:50

Storage&Stability:

Store at 4 °C short term. Aliquot and store at -20 °C long term. Avoid freeze-thaw cycles.

Specificity:

CPSF73 Antibody detects endogenous levels of total CPSF73

DATA:

Western blot analysis of CPSF73 expression in (1) HeLa cell lysate; (2) NIH/3T3 cell lysate.

Note:

For research use only, not for use in diagnostic procedure.

Bioworld Technology, Inc.

Add: 1660 South Highway 100, Suite 500 St. Louis Park, MN 55416, USA.

Email: info@bioworld.com

Tel: 6123263284

Fax: 6122933841

Bioworld technology, co. Ltd.

Add: No 9, weidi road Qixia District Nanjing, 210046, P. R. China.

Email: info@biogol.com

Tel: 0086-025-68037686

Fax: 0086-025-68035151