

LPP Rabbit monoclonal antibody

Catalog: BS41264

Host: Rabbit

Reactivity: Human Mouse Rat

BackGround:

May play a structural role at sites of cell adhesion in maintaining cell shape and motility. In addition to these structural functions, it may also be implicated in signaling events and activation of gene transcription.

Product:

Rabbit IgG, 1mg/ml in PBS with 0.02% sodium azide, 50% glycerol, pH7.2.

Molecular Weight:

70kDa

Swiss-Prot:

Q93052

Purification&Purity:

Affinity-chromatography

Applications:

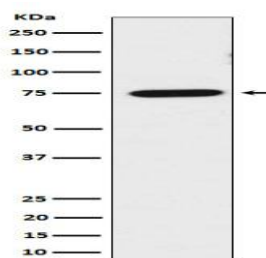
WB 1:500~1:2000 IHC 1:50~1:200 ICC/IF 1:50~1:200

Storage&Stability:

Store at 4 °C short term. Aliquot and store at -20 °C long term. Avoid freeze-thaw cycles.

Specificity:

LPP Antibody detects endogenous levels of total LPP

DATA:

Western blot analysis of LPP expression in HeLa cell lysate.

Note:

For research use only, not for use in diagnostic procedure.

Bioworld Technology, Inc.

Add: 1660 South Highway 100, Suite 500 St. Louis Park, MN 55416, USA.

Email: info@bioworld.com

Tel: 6123263284

Fax: 6122933841

Bioworld technology, co. Ltd.

Add: No 9, weidi road Qixia District Nanjing, 210046, P. R. China.

Email: info@biogot.com

Tel: 0086-025-68037686

Fax: 0086-025-68035151