

## IκB-ε (phospho-S22) polyclonal antibody

Catalog: BS4107

Host: Rabbit

Reactivity: Human, Mouse, Rat

### BackGround:

IκB-ε (I-kappa-B-epsilon), also known as NFKBIE (NFκB inhibitor epsilon) or IKBE, is a 500 amino acid protein that belongs to the NFκB inhibitor family. Localizing to the cytoplasm, IκB-ε is highly expressed in spleen, testis and lung, with lower levels of expression found in kidney, pancreas, heart, placenta, brain, granulocytes and macrophages. IκB-ε inhibits c-Rel and NFκB subunits p50, p52 and p65 by forming a complex with them in the cytoplasm, preventing them from activating genes in the nucleus. IκB-ε undergoes serine phosphorylation, resulting in the protein being marked for destruction via the ubiquitination pathway.

### Product:

1 mg/ml in Phosphate buffered saline (PBS) with 0.05% sodium azide, approx. pH 7.2.

### Molecular Weight:

~ 45 kDa

### Swiss-Prot:

O00221

### Purification&Purity:

The antibody was affinity-purified from rabbit antiserum by affinity-chromatography using epitope-specific immunogen and the purity is > 95% (by SDS-PAGE).

### Applications:

IHC: 1:50~1:200

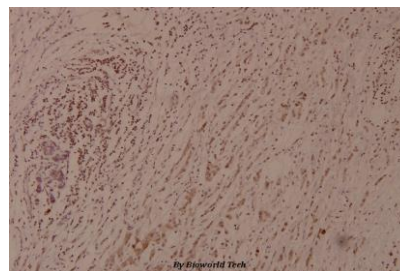
### Storage&Stability:

Store at 4 °C short term. Aliquot and store at -20 °C long term. Avoid freeze-thaw cycles.

### Specificity:

p-IκB-ε (S22) polyclonal antibody detects endogenous levels of IκB-ε protein only when phosphorylated at Ser22

### DATA:



Immunohistochemistry (IHC) analyzes of p-IκB-ε (S22) pAb in paraffin-embedded human breast carcinoma tissue at 1:100.

### Note:

For research use only, not for use in diagnostic procedure.

### Bioworld Technology, Inc.

Add: 1660 South Highway 100, Suite 500 St. Louis Park, MN 55416, USA.

Email: [info@bioworld.com](mailto:info@bioworld.com)

Tel: 6123263284

Fax: 6122933841

### Bioworld technology, co. Ltd.

Add: No 9, weidi road Qixia District Nanjing, 210046, P. R. China.

Email: [info@biogot.com](mailto:info@biogot.com)

Tel: 0086-025-68037686

Fax: 0086-025-68035151