

TAB3 Rabbit monoclonal antibody

Catalog: BS41065

Host: Rabbit

Reactivity: Human Mouse

BackGround:

Adapter linking MAP3K7/TAK1 and TRAF6 or TRAF2. Mediator of MAP3K7 activation, respectively in the IL1 and TNF signaling pathways. Plays a role in activation of NF-kappa-B and AP1 transcription factor. Isoform 2 may be an oncogenic factor.

Product:

Rabbit IgG, 1mg/ml in PBS with 0.02% sodium azide, 50% glycerol, pH7.2.

Molecular Weight:

90kDa

Swiss-Prot:

Q8N5C8

Purification&Purity:

Affinity-chromatography

Applications:

WB 1:500~1:2000 CC/IF 1:50~1:200

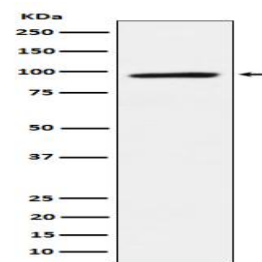
Storage&Stability:

Store at 4 °C short term. Aliquot and store at -20 °C long term. Avoid freeze-thaw cycles.

Specificity:

TAB3 antibody detects endogenous levels of total TAB3

DATA:



Western blot analysis of TAB3 expression in HepG2 cell lysate.

Note:

For research use only, not for use in diagnostic procedure.

Bioworld Technology, Inc.

Add: 1660 South Highway 100, Suite 500 St. Louis Park,
MN 55416, USA.

Email: info@bioworld.com

Tel: 6123263284

Fax: 6122933841

Bioworld technology, co. Ltd.

Add: No 9, weidi road Qixia District Nanjing, 210046,
P. R. China.

Email: info@biogot.com

Tel: 0086-025-68037686

Fax: 0086-025-68035151