

SorLA Rabbit monoclonal antibody

Catalog: BS41033

Host: Rabbit

Reactivity: Human Mouse Rat

BackGround:

Likely to be a multifunctional endocytic receptor, that may be implicated in the uptake of lipoproteins and of proteases. Binds LDL, the major cholesterol-carrying lipoprotein of plasma, and transports it into cells by endocytosis. Binds the receptor-associated protein (RAP). Could play a role in cell-cell interaction.

Product:

Rabbit IgG, 1mg/ml in PBS with 0.02% sodium azide, 50% glycerol, pH7.2.

Molecular Weight:

270kDa

Swiss-Prot:

Q92673

Purification&Purity:

Affinity-chromatography

Applications:

WB 1:500~1:2000 IHC 1:100~1:500

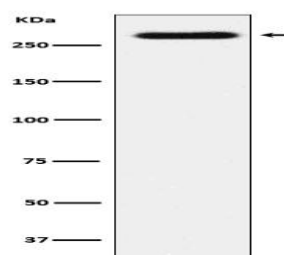
Storage&Stability:

Store at 4 °C short term. Aliquot and store at -20 °C long term. Avoid freeze-thaw cycles.

Specificity:

SorLA Antibody detects endogenous levels of total SorLA

DATA:



Western blot analysis of SorLA expression in SH-SY5Y cell lysate.

Note:

For research use only, not for use in diagnostic procedure.

Bioworld Technology, Inc.

Add: 1660 South Highway 100, Suite 500 St. Louis Park, MN 55416, USA.

Email: info@bioworld.com

Tel: 6123263284

Fax: 6122933841

Bioworld technology, co. Ltd.

Add: No 9, weidi road Qixia District Nanjing, 210046, P. R. China.

Email: info@biogol.com

Tel: 0086-025-68037686

Fax: 0086-025-68035151