

ATAD2 Rabbit monoclonal antibody

Catalog: BS40983

Host: Rabbit

Reactivity: Human

BackGround:

May be a transcriptional coactivator of the nuclear receptor ESR1 required to induce the expression of a subset of estradiol target genes, such as CCND1, MYC and E2F1. May play a role in the recruitment or occupancy of CREBBP at some ESR1 target gene promoters. May be required for histone hyperacetylation. Involved in the estrogen-induced cell proliferation and cell cycle progression of breast cancer cells.

Product:

Rabbit IgG, 1mg/ml in PBS with 0.02% sodium azide, 50% glycerol, pH7.2.

Molecular Weight:

180kDa

Swiss-Prot:

Q6PL18

Purification&Purity:

Affinity-chromatography

Applications:

WB 1:500~1:2000 ICC/IF 1:50~1:200 FC 1:50

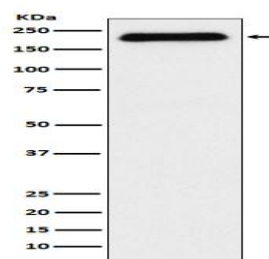
Storage&Stability:

Store at 4 °C short term. Aliquot and store at -20 °C long term. Avoid freeze-thaw cycles.

Specificity:

ATAD2 Antibody detects endogenous levels of total ATAD2

DATA:



Western blot analysis of ATAD2 expression in MCF-7 cell lysate.

Note:

For research use only, not for use in diagnostic procedure.

Bioworld Technology, Inc.

Add: 1660 South Highway 100, Suite 500 St. Louis Park, MN 55416, USA.

Email: info@bioworld.com

Tel: 6123263284

Fax: 6122933841

Bioworld technology, co. Ltd.

Add: No 9, weidi road Qixia District Nanjing, 210046, P. R. China.

Email: info@biogol.com

Tel: 0086-025-68037686

Fax: 0086-025-68035151