

**ATP2A1/SERCA1 Rabbit monoclonal antibody**

Catalog: BS40978

Host: Rabbit

Reactivity: Human

**BackGround:**

Key regulator of striated muscle performance by acting as the major  $\text{Ca}^{2+}$  ATPase responsible for the reuptake of cytosolic  $\text{Ca}^{2+}$  into the sarcoplasmic reticulum. Catalyzes the hydrolysis of ATP coupled with the translocation of calcium from the cytosol to the sarcoplasmic reticulum lumen. Contributes to calcium sequestration involved in muscular excitation/contraction.

**Product:**

Rabbit IgG, 1mg/ml in PBS with 0.02% sodium azide, 50% glycerol, pH7.2.

**Molecular Weight:**

100kDa

**Swiss-Prot:**

O14983

**Purification&Purity:**

Affinity-chromatography

**Applications:**

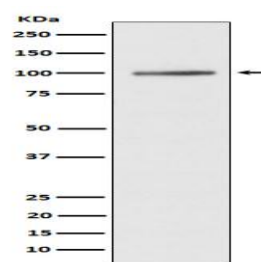
WB 1:1000~1:5000 IHC 1:50~1:200 IP 1:50

**Storage&Stability:**

Store at 4 °C short term. Aliquot and store at -20 °C long term. Avoid freeze-thaw cycles.

**Specificity:**

ATP2A1/SERCA1 Antibody detects endogenous levels of total ATP2A1/SERCA1

**DATA:**

Western blot analysis of ATP2A1/SERCA1 expression in human fetal muscle lysate.

**Note:**

For research use only, not for use in diagnostic procedure.

**Bioworld Technology, Inc.**

Add: 1660 South Highway 100, Suite 500 St. Louis Park, MN 55416, USA.

Email: [info@bioworld.com](mailto:info@bioworld.com)

Tel: 6123263284

Fax: 6122933841

**Bioworld technology, co. Ltd.**

Add: No 9, weidi road Qixia District Nanjing, 210046, P. R. China.

Email: [info@biogol.com](mailto:info@biogol.com)

Tel: 0086-025-68037686

Fax: 0086-025-68035151