

## Placental lactogen Rabbit monoclonal antibody

Catalog: BS40957

Host: Rabbit

Reactivity: Human

### BackGround:

Produced only during pregnancy and is involved in stimulating lactation, fetal growth and metabolism. Does not interact with GHR but only activates PRLR through zinc-induced dimerization.

### Product:

Rabbit IgG, 1mg/ml in PBS with 0.02% sodium azide, 50% glycerol, pH7.2.

### Molecular Weight:

25kDa

### Swiss-Prot:

P01243/P0DML2/P0DML3

### Purification&Purity:

Affinity-chromatography

### Applications:

WB 1:1000~1:5000 IHC 1:50~1:200 IP 1:50

### Storage&Stability:

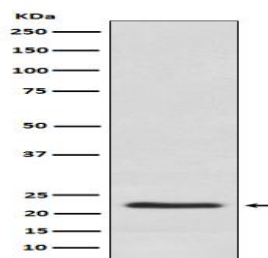
Store at 4 °C short term. Aliquot and store at -20 °C long

term. Avoid freeze-thaw cycles.

### Specificity:

Placental lactogen Antibody detects endogenous levels of total Placental lactogen

### DATA:



Western blot analysis of Placental lactogen expression in Human placenta lysate.

### Note:

For research use only, not for use in diagnostic procedure.

### Bioworld Technology, Inc.

Add: 1660 South Highway 100, Suite 500 St. Louis Park, MN 55416, USA.

Email: [info@bioworld.com](mailto:info@bioworld.com)

Tel: 6123263284

Fax: 6122933841

### Bioworld technology, co. Ltd.

Add: No 9, weidi road Qixia District Nanjing, 210046, P. R. China.

Email: [info@biogot.com](mailto:info@biogot.com)

Tel: 0086-025-68037686

Fax: 0086-025-68035151