

## ATOH1 Rabbit monoclonal antibody

Catalog: BS40874

Host: Rabbit

Reactivity: Human Mouse Rat

### BackGround:

Activates E box-dependent transcription in collaboration with TCF3/E47, but the activity is completely antagonized by the negative regulator of neurogenesis HES1. May play a role in the differentiation of subsets of neural cells by activating E box-dependent transcription.

### Product:

Rabbit IgG, 1mg/ml in PBS with 0.02% sodium azide, 50% glycerol, pH7.2.

### Molecular Weight:

38kDa

### Swiss-Prot:

Q92858

### Purification&Purity:

Affinity-chromatography

### Applications:

WB 1:500~1:1000

### Storage&Stability:

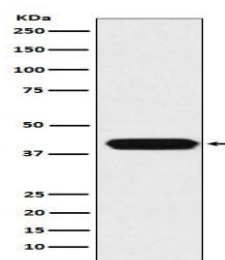
Store at 4 °C short term. Aliquot and store at -20 °C long

term. Avoid freeze-thaw cycles.

### Specificity:

MATH1/HATH1 Antibody detects endogenous levels of total MATH1/HATH1

### DATA:



Western blot analysis of MATH1/HATH1 expression in HepG2 cell lysate.

### Note:

For research use only, not for use in diagnostic procedure.

### Bioworld Technology, Inc.

Add: 1660 South Highway 100, Suite 500 St. Louis Park, MN 55416, USA.

Email: [info@bioworld.com](mailto:info@bioworld.com)

Tel: 6123263284

Fax: 6122933841

### Bioworld technology, co. Ltd.

Add: No 9, weidi road Qixia District Nanjing, 210046, P. R. China.

Email: [info@biogol.com](mailto:info@biogol.com)

Tel: 0086-025-68037686

Fax: 0086-025-68035151