

Human IgG2 Rabbit monoclonal antibody

Catalog: BS40845

Host: Rabbit

Reactivity: Human

BackGround:

There are four IgG subclasses (IgG1, 2, 3 and 4) in humans, named in order of their abundance in serum (IgG1 being the most abundant). IgG2 is the only IgG subclass which passes through the placenta at a level generally lower than that found in the mother.

Product:

Rabbit IgG, 1mg/ml in PBS with 0.02% sodium azide, 50% glycerol, pH7.2.

Molecular Weight:

53kDa

Swiss-Prot:

P01859

Purification&Purity:

Affinity-chromatography

Applications:

WB 1:1000~1:5000 IHC 1:100~1:500 ICC/IF 1:50~1:200

Storage&Stability:

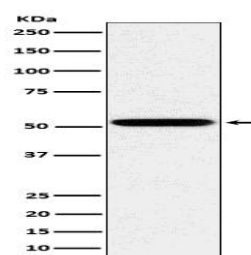
Store at 4 °C short term. Aliquot and store at -20 °C long

term. Avoid freeze-thaw cycles.

Specificity:

Human IgG2 Antibody detects endogenous levels of total human IgG2

DATA:



Western blot analysis of human IgG2 expression in Human spleen lysate.

Note:

For research use only, not for use in diagnostic procedure.

Bioworld Technology, Inc.

Add: 1660 South Highway 100, Suite 500 St. Louis Park, MN 55416, USA.

Email: info@bioworld.com

Tel: 6123263284

Fax: 6122933841

Bioworld technology, co. Ltd.

Add: No 9, weidi road Qixia District Nanjing, 210046, P. R. China.

Email: info@biogol.com

Tel: 0086-025-68037686

Fax: 0086-025-68035151