

## Calsequestrin 1 Rabbit monoclonal antibody

Catalog: BS40791

Host: Rabbit

Reactivity: Human Mouse Rat

### BackGround:

Calsequestrin is a high-capacity, moderate affinity, calcium-binding protein and thus acts as an internal calcium store in muscle. The release of calcium bound to calsequestrin through a calcium release channel triggers muscle contraction. Binds 40 to 50 moles of calcium. Also binds laminin.

### Product:

Rabbit IgG, 1mg/ml in PBS with 0.02% sodium azide, 50% glycerol, pH7.2.

### Molecular Weight:

63kDa

### Swiss-Prot:

P31415

### Purification&Purity:

Affinity-chromatography

### Applications:

WB 1:1000~1:5000 IHC 1:50~1:200 FC 1:100

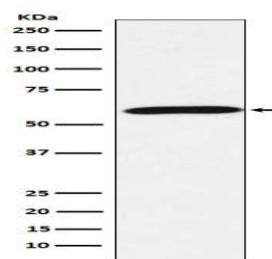
### Storage&Stability:

Store at 4 °C short term. Aliquot and store at -20 °C long term. Avoid freeze-thaw cycles.

### Specificity:

Calsequestrin 1 Antibody detects endogenous levels of total Calsequestrin 1

### DATA:



Western blot analysis of Calsequestrin 1 expression in Human skeletal muscle lysate.

### Note:

For research use only, not for use in diagnostic procedure.

### Bioworld Technology, Inc.

Add: 1660 South Highway 100, Suite 500 St. Louis Park, MN 55416, USA.

Email: [info@bioworld.com](mailto:info@bioworld.com)

Tel: 6123263284

Fax: 6122933841

### Bioworld technology, co. Ltd.

Add: No 9, weidi road Qixia District Nanjing, 210046, P. R. China.

Email: [info@biogol.com](mailto:info@biogol.com)

Tel: 0086-025-68037686

Fax: 0086-025-68035151