

## SA2 Rabbit monoclonal antibody

Catalog: BS40686

Host: Rabbit

Reactivity: Human Mouse Rat

### BackGround:

Component of cohesin complex, a complex required for the cohesion of sister chromatids after DNA replication. The cohesin complex apparently forms a large proteinaceous ring within which sister chromatids can be trapped. At anaphase, the complex is cleaved and dissociates from chromatin, allowing sister chromatids to segregate.

### Product:

Rabbit IgG, 1mg/ml in PBS with 0.02% sodium azide, 50% glycerol, pH7.2.

### Molecular Weight:

141kDa

### Swiss-Prot:

Q8N3U4

### Purification&Purity:

Affinity-chromatography

### Applications:

WB 1:500~1:1000 IHC 1:100~1:500 ICC/IF 1:50~1:200  
FC 1:200

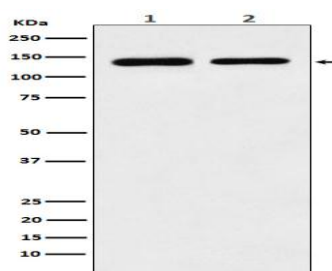
### Storage&Stability:

Store at 4 °C short term. Aliquot and store at -20 °C long term. Avoid freeze-thaw cycles.

### Specificity:

SA2 Antibody detects endogenous levels of total SA2

### DATA:



Western blot analysis of SA2 expression in (1) K562 cell lysate; (2) Raw264.7 cell lysate.

### Note:

For research use only, not for use in diagnostic procedure.

### Bioworld Technology, Inc.

Add: 1660 South Highway 100, Suite 500 St. Louis Park,  
MN 55416, USA.

Email: [info@bioworld.com](mailto:info@bioworld.com)

Tel: 6123263284

Fax: 6122933841

### Bioworld technology, co. Ltd.

Add: No 9, weidi road Qixia District Nanjing, 210046,  
P. R. China.

Email: [info@biogol.com](mailto:info@biogol.com)

Tel: 0086-025-68037686

Fax: 0086-025-68035151