

RNA polymerase beta Rabbit monoclonal antibody

Catalog: BS40663

Host: Rabbit

Reactivity: Escherichia coli

BackGround:

RNA polymerase beta (rpoB) is the β subunit of the bacterial RNA polymerase and is the subunit which possesses the polymerase activity. This protein is a highly conserved enzyme contained by many bacteria and has been reported as a useful marker for studies in bacterial identification and ecology.

Product:

Rabbit IgG, 1mg/ml in PBS with 0.02% sodium azide, 50% glycerol, pH7.2.

Molecular Weight:

150kDa

Swiss-Prot:

P0A8V2

Purification&Purity:

Affinity-chromatography

Applications:

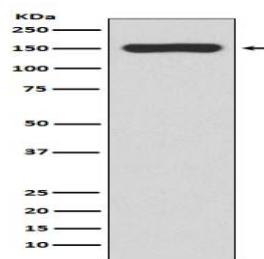
WB 1:500~1:2000 IP 1:20

Storage&Stability:

Store at 4 °C short term. Aliquot and store at -20 °C long term. Avoid freeze-thaw cycles.

Specificity:

RNA polymerase beta Antibody detects endogenous levels of total RNA polymerase beta

DATA:

Western blot analysis of RNA polymerase beta expression in E.coli lysate.

Note:

For research use only, not for use in diagnostic procedure.

Bioworld Technology, Inc.

Add: 1660 South Highway 100, Suite 500 St. Louis Park, MN 55416, USA.

Email: info@bioworld.com

Tel: 6123263284

Fax: 6122933841

Bioworld technology, co. Ltd.

Add: No 9, weidi road Qixia District Nanjing, 210046, P. R. China.

Email: info@biogol.com

Tel: 0086-025-68037686

Fax: 0086-025-68035151