

## GABARAP Rabbit monoclonal antibody

Catalog: BS40643

Host: Rabbit

Reactivity: Human Mouse Rat

### BackGround:

GABARAP is cleaved at its carboxyl terminus, which leads to conjugation by either of the phospholipids phosphatidylethanolamine or phosphatidylserine. This processing converts GABARAP from a type I to a type II membrane bound form involved in autophagosome biogenesis. Processing of GABARAP involves cleavage by Atg4 family members followed by conjugation by the E1 and E2 like enzymes Atg7 and Atg3.

### Product:

Rabbit IgG, 1mg/ml in PBS with 0.02% sodium azide, 50% glycerol, pH7.2.

### Molecular Weight:

17kDa

### Swiss-Prot:

O95166

### Purification&Purity:

Affinity-chromatography

### Applications:

WB 1:500~1:2000 IHC 1:100~1:500 ICC/IF 1:50~1:200  
FC 1:50

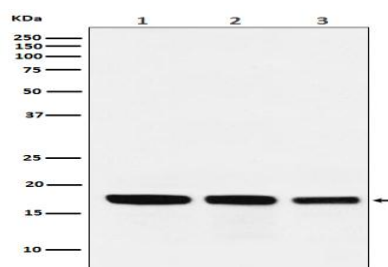
### Storage&Stability:

Store at 4 °C short term. Aliquot and store at -20 °C long term. Avoid freeze-thaw cycles.

### Specificity:

GABARAP Antibody detects endogenous levels of total GABARAP

### DATA:



Western blot analysis of GABARAP expression in (1) HepG2 cell lysate; (2) Mouse kidney lysate; (3) Rat heart lysate.

### Note:

For research use only, not for use in diagnostic procedure.

### Bioworld Technology, Inc.

Add: 1660 South Highway 100, Suite 500 St. Louis Park, MN 55416, USA.

Email: [info@bioworld.com](mailto:info@bioworld.com)

Tel: 6123263284

Fax: 6122933841

### Bioworld technology, co. Ltd.

Add: No 9, weidi road Qixia District Nanjing, 210046, P. R. China.

Email: [info@biogol.com](mailto:info@biogol.com)

Tel: 0086-025-68037686

Fax: 0086-025-68035151