

Ferritin Light Chain Rabbit monoclonal antibody

Catalog: BS40582

Host: Rabbit

Reactivity: Human Mouse Rat

BackGround:

Stores iron in a soluble, non-toxic, readily available form. Important for iron homeostasis. Iron is taken up in the ferrous form and deposited as ferric hydroxides after oxidation. Also plays a role in delivery of iron to cells. Mediates iron uptake in capsule cells of the developing kidney.

Product:

Rabbit IgG, 1mg/ml in PBS with 0.02% sodium azide, 50% glycerol, pH7.2.

Molecular Weight:

20kDa

Swiss-Prot:

P02792

Purification&Purity:

Affinity-chromatography

Applications:

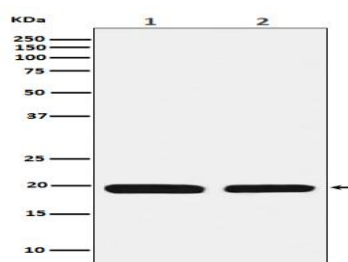
WB 1:1000~1:5000 IP 1:50 FC 1:100

Storage&Stability:

Store at 4 °C short term. Aliquot and store at -20 °C long term. Avoid freeze-thaw cycles.

Specificity:

Ferritin Light Chain Antibody detects endogenous levels of total Ferritin Light Chain

DATA:

Western blot analysis of Ferritin Light Chain expression in (1) HepG2 cell lysate; (2) Mouse liver lysate.

Note:

For research use only, not for use in diagnostic procedure.

Bioworld Technology, Inc.

Add: 1660 South Highway 100, Suite 500 St. Louis Park, MN 55416, USA.

Email: info@bioworld.com

Tel: 6123263284

Fax: 6122933841

Bioworld technology, co. Ltd.

Add: No 9, weidi road Qixia District Nanjing, 210046, P. R. China.

Email: info@biogol.com

Tel: 0086-025-68037686

Fax: 0086-025-68035151