

Phospho-POLR2A (S2) Rabbit monoclonal antibody

Catalog: BS40518

Host: Rabbit

Reactivity: Human Mouse Rat

BackGround:

During transcription elongation, Pol II moves on the template as the transcript elongates. Elongation is influenced by the phosphorylation status of the C-terminal domain (CTD) of Pol II largest subunit (RPB1), which serves as a platform for assembly of factors that regulate transcription initiation, elongation, termination and mRNA processing.

Product:

Rabbit IgG, 1mg/ml in PBS with 0.02% sodium azide, 50% glycerol, pH7.2.

Molecular Weight:

270kDa

Swiss-Prot:

P24928

Purification&Purity:

Affinity-chromatography

Applications:

WB 1:500~1:2000 IHC 1:50~1:200 ICC/IF 1:50~1:200
IP 1:50 FC 1:50

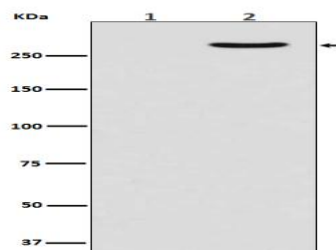
Storage&Stability:

Store at 4 °C short term. Aliquot and store at -20 °C long term. Avoid freeze-thaw cycles.

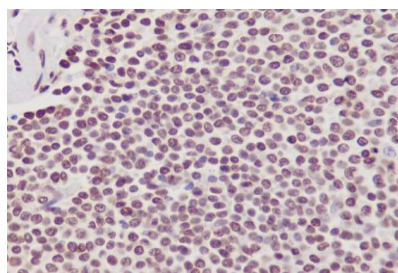
Specificity:

Phospho-POLR2A (S2) Antibody detects endogenous levels of total Phospho-POLR2A (S2)

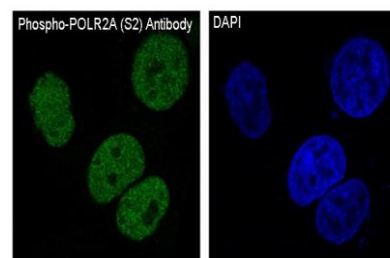
DATA:



Western blot analysis of Phospho-POLR2A (S2) expression in (1) MCF7 cell lysate treated with Lambda Phosphatase; (2) MCF7 cell lysate.



Immunohistochemical analysis of paraffin-embedded human spleen, using Phospho-POLR2A (S2) Antibody.



Immunofluorescent analysis of MCF7 cells, using Phospho-POLR2A (S2) Antibody .

Note:

For research use only, not for use in diagnostic procedure.

Bioworld Technology, Inc.

Add: 1660 South Highway 100, Suite 500 St. Louis Park, MN 55416, USA.

Email: info@bioworld.com

Tel: 6123263284

Fax: 6122933841

Bioworld technology, co. Ltd.

Add: No 9, weidi road Qixia District Nanjing, 210046, P. R. China.

Email: info@biogot.com

Tel: 0086-025-68037686

Fax: 0086-025-68035151