

## Rac1/2/3 Rabbit monoclonal antibody

Catalog: BS40497

Host: Rabbit

Reactivity: Human Mouse Rat

### BackGround:

In mammals, Rac exists as three isoforms, Rac1, Rac2 and Rac3, which are highly similar in sequence. Rac and Cdc42 play key signaling roles in cytoskeletal reorganization, membrane trafficking, transcriptional regulation, cell growth and development. GTP binding stimulates the activity of Rac/Cdc42, and the hydrolysis of GTP to GDP through the protein's intrinsic GTPase activity, rendering it inactive.

### Product:

Rabbit IgG, 1mg/ml in PBS with 0.02% sodium azide, 50% glycerol, pH7.2.

### Molecular Weight:

21kDa

### Swiss-Prot:

P63000/P15153/P60763

### Purification&Purity:

Affinity-chromatography

### Applications:

WB 1:500~1:2000

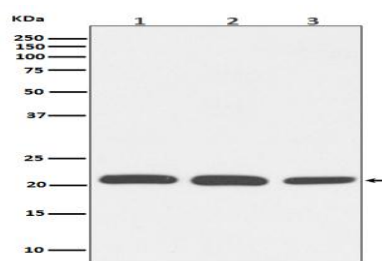
### Storage&Stability:

Store at 4 °C short term. Aliquot and store at -20 °C long term. Avoid freeze-thaw cycles.

### Specificity:

Rac1/2/3 Antibody detects endogenous levels of total Rac1/2/3

### DATA:



Western blot analysis of Rac1/2/3 expression in (1) HeLa cell lysate; (2) NIH/3T3 cell lysate; (3) PC-12 cell lysate.

### Note:

For research use only, not for use in diagnostic procedure.

### Bioworld Technology, Inc.

Add: 1660 South Highway 100, Suite 500 St. Louis Park, MN 55416, USA.

Email: [info@bioworld.com](mailto:info@bioworld.com)

Tel: 6123263284

Fax: 6122933841

### Bioworld technology, co. Ltd.

Add: No 9, weidi road Qixia District Nanjing, 210046, P. R. China.

Email: [info@biogol.com](mailto:info@biogol.com)

Tel: 0086-025-68037686

Fax: 0086-025-68035151