

Phosphotyrosine Rabbit monoclonal antibody

Catalog: BS40446

Host: Rabbit

Reactivity: Human Mouse Rat

BackGround:

Tyrosine phosphorylation plays a key role in cellular signaling. Research studies have shown that in cancer, unregulated tyrosine kinase activity can drive malignancy and tumor formation by generating inappropriate proliferation and survival signals. Antibodies specific for phospho-tyrosine have been invaluable reagents in these studies.

Product:

Rabbit IgG, 1mg/ml in PBS with 0.02% sodium azide, 50% glycerol, pH7.2.

Molecular Weight:

kDa

Swiss-Prot:

N/A

Purification&Purity:

Affinity-chromatography

Applications:

WB 1:500~1:2000 ICC/IF 1:50~1:200 IP 1:50 FC 1:50

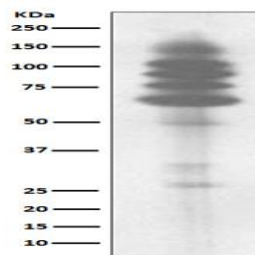
Storage&Stability:

Store at 4 °C short term. Aliquot and store at -20 °C long term. Avoid freeze-thaw cycles.

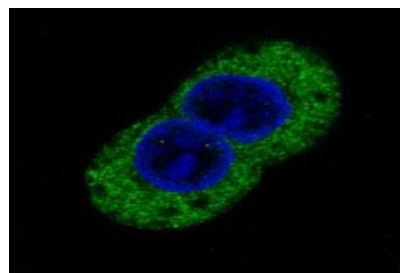
Specificity:

Phosphotyrosine Antibody detects endogenous levels of total Phosphotyrosine

DATA:



Western blot analysis of Phosphotyrosine expression in Jurkat cell lysate.



Immunofluorescent analysis of A431 cells treated with pervanadate, using Phosphotyrosine Antibody.

Note:

For research use only, not for use in diagnostic procedure.

Bioworld Technology, Inc.

Add: 1660 South Highway 100, Suite 500 St. Louis Park, MN 55416, USA.

Email: info@bioworld.com

Tel: 6123263284

Fax: 6122933841

Bioworld technology, co. Ltd.

Add: No 9, weidi road Qixia District Nanjing, 210046, P. R. China.

Email: info@biogot.com

Tel: 0086-025-68037686

Fax: 0086-025-68035151