

## NG2 Rabbit monoclonal antibody

Catalog: BS40424

Host: Rabbit

Reactivity: Human

**BackGround:**

Play a role in cell proliferation and migration which stimulates endothelial cells motility during microvascular morphogenesis. May also inhibit neurite outgrowth and growth cone collapse during axon regeneration. May modulate the plasminogen system by enhancing plasminogen activation and inhibiting angiostatin.

**Product:**

Rabbit IgG, 1mg/ml in PBS with 0.02% sodium azide, 50% glycerol, pH7.2.

**Molecular Weight:**

251kDa

**Swiss-Prot:**

Q6UVK1

**Purification&Purity:**

Affinity-chromatography

**Applications:**

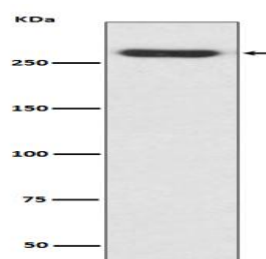
WB 1:500~1:2000 IHC 1:50~1:200 FC 1:50

**Storage&Stability:**

Store at 4 °C short term. Aliquot and store at -20 °C long term. Avoid freeze-thaw cycles.

**Specificity:**

NG2 Antibody detects endogenous levels of total NG2

**DATA:**

Western blot analysis of NG2 expression in A375 cell lysate.

**Note:**

For research use only, not for use in diagnostic procedure.

**Bioworld Technology, Inc.**

Add: 1660 South Highway 100, Suite 500 St. Louis Park,  
MN 55416, USA.

Email: [info@bioworld.com](mailto:info@bioworld.com)

Tel: 6123263284

Fax: 6122933841

**Bioworld technology, co. Ltd.**

Add: No 9, weidi road Qixia District Nanjing, 210046,  
P. R. China.

Email: [info@biogol.com](mailto:info@biogol.com)

Tel: 0086-025-68037686

Fax: 0086-025-68035151