

## S100A10 Rabbit monoclonal antibody

Catalog: BS40411

Host: Rabbit

Reactivity: Human Mouse

**BackGround:**

S100A10 acts as a cellular chaperone for hepatitis B (Hep B) virus polymerase. Hep B virus polymerase normally localizes to the cytoplasm only, though in the presence of S-100A10 a portion relocates to the nucleus, implying a role for S100A10 and intracellular calcium in the process of viral replication.

**Product:**

Rabbit IgG, 1mg/ml in PBS with 0.02% sodium azide, 50% glycerol, pH7.2.

**Molecular Weight:**

11kDa

**Swiss-Prot:**

P60903

**Purification&Purity:**

Affinity-chromatography

**Applications:**

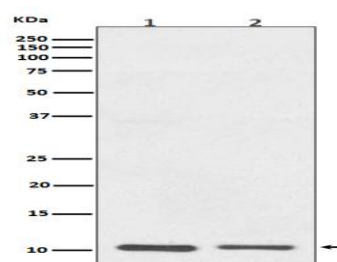
WB 1:500~1:2000 IHC 1:100~1:500

**Storage&Stability:**

Store at 4 °C short term. Aliquot and store at -20 °C long term. Avoid freeze-thaw cycles.

**Specificity:**

S100A10 Antibody detects endogenous levels of total S100A10

**DATA:**

Western blot analysis of S100A10 expression in (1) A431 cell lysate; (2) RAW264.7 cell lysate.

**Note:**

For research use only, not for use in diagnostic procedure.

**Bioworld Technology, Inc.**

Add: 1660 South Highway 100, Suite 500 St. Louis Park, MN 55416, USA.

Email: [info@bioworld.com](mailto:info@bioworld.com)

Tel: 6123263284

Fax: 6122933841

**Bioworld technology, co. Ltd.**

Add: No 9, weidi road Qixia District Nanjing, 210046, P. R. China.

Email: [info@biogol.com](mailto:info@biogol.com)

Tel: 0086-025-68037686

Fax: 0086-025-68035151