

FUS / TLS Rabbit monoclonal antibody

Catalog: BS40384

Host: Rabbit

Reactivity: Human Mouse Rat

BackGround:

FUS/TLS (fused in sarcoma/translocated in liposarcoma) was initially identified by investigators as a component of fusion proteins found in a variety of cancers such as myxoid liposarcoma, acute myeloid leukemia, and Ewing's tumor.

Product:

Rabbit IgG, 1mg/ml in PBS with 0.02% sodium azide, 50% glycerol, pH7.2.

Molecular Weight:

70kDa

Swiss-Prot:

P35637

Purification&Purity:

Affinity-chromatography

Applications:

WB 1:500~1:2000 IHC 1:50~1:200 ICC/IF 1:50~1:200
FC 1:50

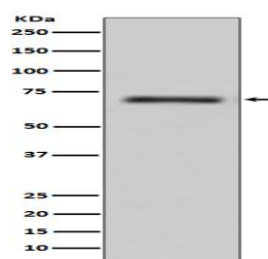
Storage&Stability:

Store at 4 °C short term. Aliquot and store at -20 °C long term. Avoid freeze-thaw cycles.

Specificity:

FUS / TLS Antibody detects endogenous levels of total FUS / TLS

DATA:



Western blot analysis of FUS / TLS expression in K562 cell lysate.

Note:

For research use only, not for use in diagnostic procedure.

Bioworld Technology, Inc.

Add: 1660 South Highway 100, Suite 500 St. Louis Park,
MN 55416, USA.

Email: info@bioworld.com

Tel: 6123263284

Fax: 6122933841

Bioworld technology, co. Ltd.

Add: No 9, weidi road Qixia District Nanjing, 210046,
P. R. China.

Email: info@biogol.com

Tel: 0086-025-68037686

Fax: 0086-025-68035151