

DUSP1 Rabbit monoclonal antibody

Catalog: BS40383

Host: Rabbit

Reactivity: Human Mouse Rat

BackGround:

The expression of DUSP1 gene is induced in human skin fibroblasts by oxidative/heat stress and growth factors. It specifies a protein with structural features similar to members of the non-receptor-type protein-tyrosine phosphatase family, and which has significant amino-acid sequence similarity to a Tyr/Ser-protein phosphatase encoded by the late gene H1 of vaccinia virus.

Product:

Rabbit IgG, 1mg/ml in PBS with 0.02% sodium azide, 50% glycerol, pH7.2.

Molecular Weight:

40kDa

Swiss-Prot:

P28562

Purification&Purity:

Affinity-chromatography

Applications:

WB 1:500~1:2000 IHC 1:50~1:200 ICC/IF 1:50~1:200
IP 1:50 FC 1:50

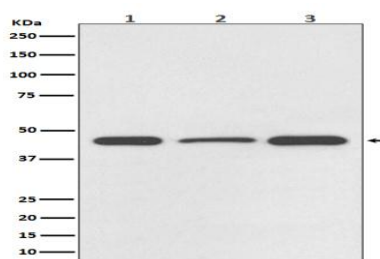
Storage&Stability:

Store at 4 °C short term. Aliquot and store at -20 °C long term. Avoid freeze-thaw cycles.

Specificity:

DUSP1 Antibody detects endogenous levels of total DUSP1

DATA:



Western blot analysis of DUSP1 expression in (1) HeLa cell lysate; (2) NIH/3T3 cell lysate; (3) PC-12 cell lysate.

Note:

For research use only, not for use in diagnostic procedure.

Bioworld Technology, Inc.

Add: 1660 South Highway 100, Suite 500 St. Louis Park, MN 55416, USA.

Email: info@bioworld.com

Tel: 6123263284

Fax: 6122933841

Bioworld technology, co. Ltd.

Add: No 9, weidi road Qixia District Nanjing, 210046, P. R. China.

Email: info@biogol.com

Tel: 0086-025-68037686

Fax: 0086-025-68035151