

## Caspase-14 Rabbit monoclonal antibody

Catalog: BS40365

Host: Rabbit

Reactivity: Human Mouse Rat

### BackGround:

Caspases are a family of cysteine proteases that play an essential role in carrying out apoptosis. Caspase-14, also named MICE, is a unique member of the caspase family with restricted expression; it is found in embryonic tissues and adult skin. Caspase-14 is weakly processed into p18 and p11 subunits by caspase-8. May also be responsible for proteolytic processing of filaggrin during terminal differentiation of keratinocytes.

### Product:

Rabbit IgG, 1mg/ml in PBS with 0.02% sodium azide, 50% glycerol, pH7.2.

### Molecular Weight:

28kDa

### Swiss-Prot:

P31944

### Purification&Purity:

Affinity-chromatography

### Applications:

WB 1:500~1:2000 IHC 1:50~1:200 ICC/IF 1:50~1:200

IP 1:50 FC 1:50

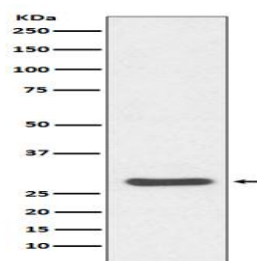
### Storage&Stability:

Store at 4 °C short term. Aliquot and store at -20 °C long term. Avoid freeze-thaw cycles.

### Specificity:

Caspase-14 Antibody detects endogenous levels of total Caspase-14

### DATA:



Western blot analysis of Caspase-14 expression in Human skin lysate.

### Note:

For research use only, not for use in diagnostic procedure.

### Bioworld Technology, Inc.

Add: 1660 South Highway 100, Suite 500 St. Louis Park, MN 55416, USA.

Email: [info@bioworld.com](mailto:info@bioworld.com)

Tel: 6123263284

Fax: 6122933841

### Bioworld technology, co. Ltd.

Add: No 9, weidi road Qixia District Nanjing, 210046, P. R. China.

Email: [info@biogot.com](mailto:info@biogot.com)

Tel: 0086-025-68037686

Fax: 0086-025-68035151