

## Phospho-beta Catenin (S33/S37) Rabbit monoclonal antibody

Catalog: BS40364

Host: Rabbit

Reactivity: Human Rat

### BackGround:

Beta-catenin is an adherens junction protein. Adherens junctions (AJs; also called the zonula adherens) are critical for the establishment and maintenance of epithelial layers, such as those lining organ surfaces. AJs mediate adhesion between cells, communicate a signal that neighboring cells are present, and anchor the actin cytoskeleton. In serving these roles, AJs regulate normal cell growth and behavior.

### Product:

Rabbit IgG, 1mg/ml in PBS with 0.02% sodium azide, 50% glycerol, pH7.2.

### Molecular Weight:

92kDa

### Swiss-Prot:

P35222

### Purification&Purity:

Affinity-chromatography

### Applications:

WB 1:500-1000

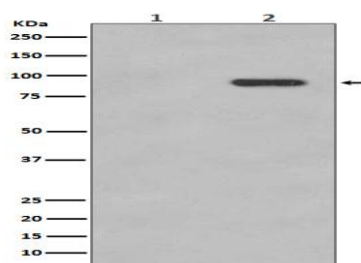
### Storage&Stability:

Store at 4 °C short term. Aliquot and store at -20 °C long term. Avoid freeze-thaw cycles.

### Specificity:

Phospho-beta Catenin (S33/S37) Antibody detects endogenous levels of total Phospho-beta Catenin (S33/S37)

### DATA:



Western blot analysis of Phospho-beta Catenin (S33/S37) expression in (1) 293T cell lysate; (2) 293T cell lysate treated with calyculin A.

### Note:

For research use only, not for use in diagnostic procedure.

### Bioworld Technology, Inc.

Add: 1660 South Highway 100, Suite 500 St. Louis Park, MN 55416, USA.

Email: [info@bioworld.com](mailto:info@bioworld.com)

Tel: 6123263284

Fax: 6122933841

### Bioworld technology, co. Ltd.

Add: No 9, weidi road Qixia District Nanjing, 210046, P. R. China.

Email: [info@biogol.com](mailto:info@biogol.com)

Tel: 0086-025-68037686

Fax: 0086-025-68035151