

## Phospho-Rac1/Cdc42 (Ser71) Rabbit monoclonal antibody

Catalog: BS40354

Host: Rabbit

Reactivity: Human

### BackGround:

Rac and Cdc42 are members of the Rho-GTPase family. In mammals, Rac exists as three isoforms, Rac1, Rac2 and Rac3, which are highly similar in sequence. Rac1 and Cdc42, the most widely studied of this group, are ubiquitously expressed. Rac2 is expressed in cells of hematopoietic origin, and Rac3, while highly expressed in brain, is also found in many other tissues. Rac and Cdc42 play key signaling roles in cytoskeletal reorganization, membrane trafficking, transcriptional regulation, cell growth and development.

### Product:

Rabbit IgG, 1mg/ml in PBS with 0.02% sodium azide, 50% glycerol, pH7.2.

### Molecular Weight:

24kDa

### Swiss-Prot:

P60953/P63000

### Purification&Purity:

Affinity-chromatography

### Applications:

WB 1:500~1:1000

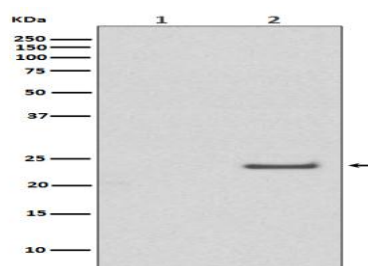
### Storage&Stability:

Store at 4 °C short term. Aliquot and store at -20 °C long term. Avoid freeze-thaw cycles.

### Specificity:

Phospho-Rac1/Cdc42 (Ser71) Antibody detects endogenous levels of total Phospho-Rac1/Cdc42 (Ser71)

### DATA:



Western blot analysis of Phospho-Rac1/Cdc42 (Ser71) expression in (1) A431 cell lysate treated with LP; (2) A431 cell lysate.

### Note:

For research use only, not for use in diagnostic procedure.

### Bioworld Technology, Inc.

Add: 1660 South Highway 100, Suite 500 St. Louis Park, MN 55416, USA.

Email: [info@bioworld.com](mailto:info@bioworld.com)

Tel: 6123263284

Fax: 6122933841

### Bioworld technology, co. Ltd.

Add: No 9, weidi road Qixia District Nanjing, 210046, P. R. China.

Email: [info@biogol.com](mailto:info@biogol.com)

Tel: 0086-025-68037686

Fax: 0086-025-68035151