

## Cdc23/APC8 Rabbit monoclonal antibody

Catalog: BS40347

Host: Rabbit

Reactivity: Human Mouse Rat

### BackGround:

Anaphase-promoting complex subunit 8 (APC8, CDC23) is a component of the tetratricopeptide repeat (TPR) APC/C sub-complex that also includes APC3 (CDC27) and APC6 (CDC16). APC8 protein associates with APC3 and APC6 to facilitate recruitment of the APC/C coactivation subunits CDC20 and Cdh1/FZR1. Research studies suggest that APC8 protein is overexpressed in papillary thyroid cancer and acts as an important regulator of cell cycle progression and cell growth.

### Product:

Rabbit IgG, 1mg/ml in PBS with 0.02% sodium azide, 50% glycerol, pH7.2.

### Molecular Weight:

64kDa

### Swiss-Prot:

Q9UJX2

### Purification&Purity:

Affinity-chromatography

### Applications:

WB 1:500~1:2000 ICC/IF 1:50~1:100

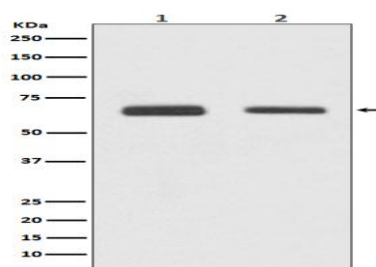
### Storage&Stability:

Store at 4 °C short term. Aliquot and store at -20 °C long term. Avoid freeze-thaw cycles.

### Specificity:

Cdc23/APC8 Antibody detects endogenous levels of total Cdc23/APC8

### DATA:



Western blot analysis of Cdc23/APC8 expression in (1)HepG2 cell lysate; (2)Jurkat cell lysate.

### Note:

For research use only, not for use in diagnostic procedure.

### Bioworld Technology, Inc.

Add: 1660 South Highway 100, Suite 500 St. Louis Park, MN 55416, USA.

Email: [info@bioworld.com](mailto:info@bioworld.com)

Tel: 6123263284

Fax: 6122933841

### Bioworld technology, co. Ltd.

Add: No 9, weidi road Qixia District Nanjing, 210046, P. R. China.

Email: [info@biogot.com](mailto:info@biogot.com)

Tel: 0086-025-68037686

Fax: 0086-025-68035151