

## HSPB8/HSP22 Rabbit monoclonal antibody

Catalog: BS40341

Host: Rabbit

Reactivity: Human Mouse Rat

### BackGround:

HSPB8 (HSP22) is a member of the small heat shock protein superfamily and the human protein is most closely related to HSP27. Similar to most other small HSPs (sHSPs), HSPB8 is predominantly transcribed in skeletal muscle and heart. In a two hybrid screen, HSPB8 interacted preferentially with a triple aspartate form of HSP27 which mimics HSP27 phosphorylated at Ser15, Ser78, and Ser82, as compared to wild-type HSP27.

### Product:

Rabbit IgG, 1mg/ml in PBS with 0.02% sodium azide, 50% glycerol, pH7.2.

### Molecular Weight:

22kDa

### Swiss-Prot:

Q9UJY1

### Purification&Purity:

Affinity-chromatography

### Applications:

WB 1:500~1:2000 IHC 1:50~1:100 ICC/IF 1:50~1:100

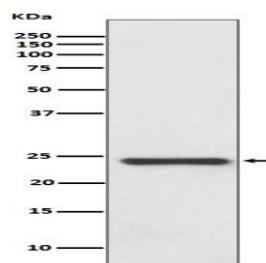
### Storage&Stability:

Store at 4 °C short term. Aliquot and store at -20 °C long term. Avoid freeze-thaw cycles.

### Specificity:

HSPB8/HSP22 Antibody detects endogenous levels of total HSPB8/HSP22

### DATA:



Western blot analysis of HSPB8/HSP22 expression in Human fetal heart lysate.

### Note:

For research use only, not for use in diagnostic procedure.

### Bioworld Technology, Inc.

Add: 1660 South Highway 100, Suite 500 St. Louis Park, MN 55416, USA.

Email: [info@bioworld.com](mailto:info@bioworld.com)

Tel: 6123263284

Fax: 6122933841

### Bioworld technology, co. Ltd.

Add: No 9, weidi road Qixia District Nanjing, 210046, P. R. China.

Email: [info@biogot.com](mailto:info@biogot.com)

Tel: 0086-025-68037686

Fax: 0086-025-68035151