

SUMO4 Rabbit monoclonal antibody

Catalog: BS40337

Host: Rabbit

Reactivity: Human Mouse Rat

BackGround:

This gene is a member of the SUMO gene family. This family of genes encode small ubiquitin-related modifiers that are attached to proteins and control the target proteins' subcellular localization, stability, or activity. The protein described in this record is located in the cytoplasm and specifically modifies IKBA, leading to negative regulation of NF-kappa-B-dependent transcription of the IL12B gene.

Product:

Rabbit IgG, 1mg/ml in PBS with 0.02% sodium azide, 50% glycerol, pH7.2.

Molecular Weight:

15kDa

Swiss-Prot:

Q6EEV6

Purification&Purity:

Affinity-chromatography

Applications:

WB 1:500~1:2000 ICC/IF 1:50~1:200 IP 1:50 FC 1:50

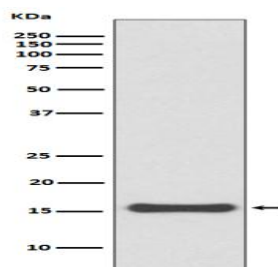
Storage&Stability:

Store at 4 °C short term. Aliquot and store at -20 °C long term. Avoid freeze-thaw cycles.

Specificity:

SUMO4 Antibody detects endogenous levels of total SUMO4

DATA:



Western blot analysis of SUMO4 expression in 293T cell lysate.

Note:

For research use only, not for use in diagnostic procedure.

Bioworld Technology, Inc.

Add: 1660 South Highway 100, Suite 500 St. Louis Park, MN 55416, USA.

Email: info@bioworld.com

Tel: 6123263284

Fax: 6122933841

Bioworld technology, co. Ltd.

Add: No 9, weidi road Qixia District Nanjing, 210046, P. R. China.

Email: info@biogol.com

Tel: 0086-025-68037686

Fax: 0086-025-68035151