

MEKK3 Rabbit monoclonal antibody

Catalog: BS40326

Host: Rabbit

Reactivity: Human Mouse Rat

BackGround:

MAP kinase kinase kinase (MEKK3 or MAP3K3) is a serine/threonine protein kinase that activates SAPK and ERK via phosphorylation and activation of their respective MAP kinase kinases, SEK and MEK1/2. MEKK3 also stimulates MEK5 via activation of ERK5/BMK1, which is at least partly regulated by a direct interaction between MEK5 and MEKK3 via p67phox-Bem1p (PB1) protein-protein interaction domains found in both proteins.

Product:

Rabbit IgG, 1mg/ml in PBS with 0.02% sodium azide, 50% glycerol, pH7.2.

Molecular Weight:

71kDa

Swiss-Prot:

Q99759

Purification&Purity:

Affinity-chromatography

Applications:

WB 1:500~1:1000 IHC 1:50~1:200 ICC/IF 1:50~1:200
IP 1:20 FC 1:50

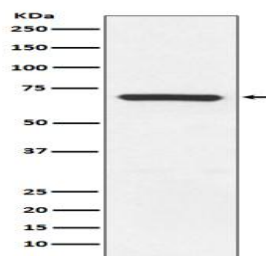
Storage&Stability:

Store at 4 °C short term. Aliquot and store at -20 °C long term. Avoid freeze-thaw cycles.

Specificity:

MEKK3 Antibody detects endogenous levels of MEKK3

DATA:



Western blot analysis of MEKK3 expression in Hela cell lysate.

Note:

For research use only, not for use in diagnostic procedure.

Bioworld Technology, Inc.

Add: 1660 South Highway 100, Suite 500 St. Louis Park, MN 55416, USA.

Email: info@bioworld.com

Tel: 6123263284

Fax: 6122933841

Bioworld technology, co. Ltd.

Add: No 9, weidi road Qixia District Nanjing, 210046, P. R. China.

Email: info@biogol.com

Tel: 0086-025-68037686

Fax: 0086-025-68035151