

## Phospho-STAT1 (Y701) Rabbit monoclonal antibody

Catalog: BS40325

Host: Rabbit

Reactivity: Human

### BackGround:

The Stat1 transcription factor is activated in response to a large number of ligands and is essential for responsiveness to IFN- $\alpha$  and IFN- $\gamma$ . Stat1 protein exists as a pair of isoforms, Stat1 $\alpha$  (91 kDa) and the splice variant Stat1 $\beta$  (84 kDa). In most cells, both isoforms are activated by IFN- $\alpha$ , but only Stat1 $\alpha$  is activated by IFN- $\gamma$ . The inappropriate activation of Stat1 occurs in many tumors.

### Product:

Rabbit IgG, 1mg/ml in PBS with 0.02% sodium azide, 50% glycerol, pH7.2.

### Molecular Weight:

87kDa

### Swiss-Prot:

P42224

### Purification&Purity:

Affinity-chromatography

### Applications:

WB 1:1000~1:2000

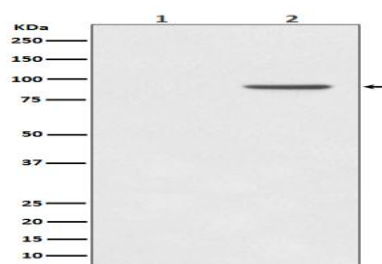
### Storage&Stability:

Store at 4 °C short term. Aliquot and store at -20 °C long term. Avoid freeze-thaw cycles.

### Specificity:

Phospho-STAT1 (Y701) Antibody detects endogenous levels of Phospho-STAT1 (Y701)

### DATA:



Western blot analysis of Phospho-STAT1 (Y701) expression in (1) A431 cell lysate; (2) A431 lysate cell treated with EGF.

### Note:

For research use only, not for use in diagnostic procedure.

### Bioworld Technology, Inc.

Add: 1660 South Highway 100, Suite 500 St. Louis Park, MN 55416, USA.

Email: [info@bioworld.com](mailto:info@bioworld.com)

Tel: 6123263284

Fax: 6122933841

### Bioworld technology, co. Ltd.

Add: No 9, weidi road Qixia District Nanjing, 210046, P. R. China.

Email: [info@biogol.com](mailto:info@biogol.com)

Tel: 0086-025-68037686

Fax: 0086-025-68035151