

14-3-3 Rabbit monoclonal antibody

Catalog: BS40324

Host: Rabbit

Reactivity: Human Mouse Rat

BackGround:

Adapter protein implicated in the regulation of a large spectrum of both general and specialized signaling pathways. Binds to a large number of partners, usually by recognition of a phosphoserine or phosphothreonine motif. Binding generally results in the modulation of the activity of the binding partner. Negative regulator of osteogenesis.

Product:

Rabbit IgG, 1mg/ml in PBS with 0.02% sodium azide, 50% glycerol, pH7.2.

Molecular Weight:

28kDa

Swiss-Prot:

P31946/P63104

Purification&Purity:

Affinity-chromatography

Applications:

WB 1:500~1:1000 IHC 1:50~1:200 FC 1:50

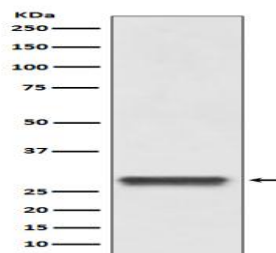
Storage&Stability:

Store at 4 °C short term. Aliquot and store at -20 °C long term. Avoid freeze-thaw cycles.

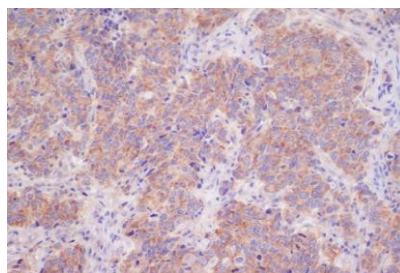
Specificity:

14-3-3 Antibody detects endogenous levels of 14-3-3

DATA:



Western blot analysis of 14-3-3 expression in HeLa lysate.



Immunohistochemical analysis of paraffin-embedded human breast cancer, using 14-3-3 Antibody.

Note:

For research use only, not for use in diagnostic procedure.

Bioworld Technology, Inc.

Add: 1660 South Highway 100, Suite 500 St. Louis Park, MN 55416, USA.

Email: info@bioworld.com

Tel: 6123263284

Fax: 6122933841

Bioworld technology, co. Ltd.

Add: No 9, weidi road Qixia District Nanjing, 210046, P. R. China.

Email: info@biogot.com

Tel: 0086-025-68037686

Fax: 0086-025-68035151