

## AMPK beta 1 Rabbit monoclonal antibody

Catalog: BS40316

Host: Rabbit

Reactivity: Human Mouse Rat

### BackGround:

AMP-activated protein kinase (AMPK) is highly conserved from yeast to plants and animals and plays a key role in the regulation of energy homeostasis. AMPK is a heterotrimeric complex composed of a catalytic  $\alpha$  subunit and regulatory  $\beta$  and  $\gamma$  subunits, each of which is encoded by two or three distinct genes ( $\alpha 1, 2$ ;  $\beta 1, 2$ ;  $\gamma 1, 2, 3$ ).

### Product:

Rabbit IgG, 1mg/ml in PBS with 0.02% sodium azide, 50% glycerol, pH7.2.

### Molecular Weight:

38kDa

### Swiss-Prot:

Q9Y478

### Purification&Purity:

Affinity-chromatography

### Applications:

WB 1:1000~1:2000 FC 1:50

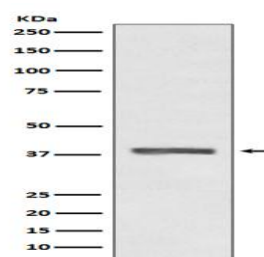
### Storage&Stability:

Store at 4 °C short term. Aliquot and store at -20 °C long term. Avoid freeze-thaw cycles.

### Specificity:

AMPK beta 1 Antibody detects endogenous levels of AMPK beta 1

### DATA:



Western blot analysis of AMPK beta 1 expression in HeLa cell lysate.

### Note:

For research use only, not for use in diagnostic procedure.

### Bioworld Technology, Inc.

Add: 1660 South Highway 100, Suite 500 St. Louis Park, MN 55416, USA.

Email: [info@bioworld.com](mailto:info@bioworld.com)

Tel: 6123263284

Fax: 6122933841

### Bioworld technology, co. Ltd.

Add: No 9, weidi road Qixia District Nanjing, 210046, P. R. China.

Email: [info@biogol.com](mailto:info@biogol.com)

Tel: 0086-025-68037686

Fax: 0086-025-68035151