

## HDAC6 Rabbit monoclonal antibody

Catalog: BS40312

Host: Rabbit

Reactivity: Human

### BackGround:

Involved in the regulation of many cellular processes, including cell migration, immune synapse formation, viral infection, and degradation of misfolded proteins. HDAC6 binds to both poly-ubiquitinated misfolded proteins and dynein motors, facilitating the transport of misfolded proteins to the aggresome. Required for subsequent recruitment of the autophagic machinery and clearance of aggresomes from the cell. Plays a key role in the protection against the deleterious effects of pathological protein aggregation that occurs in various diseases.

### Product:

Rabbit IgG, 1mg/ml in PBS with 0.02% sodium azide, 50% glycerol, pH7.2.

### Molecular Weight:

160kDa

### Swiss-Prot:

Q9UBN7

### Purification&Purity:

Affinity-chromatography

### Applications:

WB 1:5000~1:20000 IHC 1:50~1:200 ICC/IF 1:100~1:500 IP 1:50

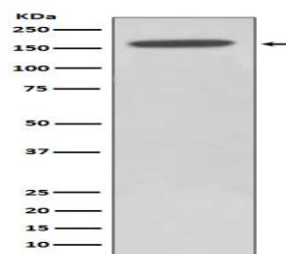
### Storage&Stability:

Store at 4 °C short term. Aliquot and store at -20 °C long term. Avoid freeze-thaw cycles.

### Specificity:

HDAC6 Antibody detects endogenous levels of HDAC6

### DATA:



Western blot analysis of HDAC6 expression in HeLa cell lysate.

### Note:

For research use only, not for use in diagnostic procedure.

### Bioworld Technology, Inc.

Add: 1660 South Highway 100, Suite 500 St. Louis Park, MN 55416, USA.

Email: [info@bioworld.com](mailto:info@bioworld.com)

Tel: 6123263284

Fax: 6122933841

### Bioworld technology, co. Ltd.

Add: No 9, weidi road Qixia District Nanjing, 210046, P. R. China.

Email: [info@biogol.com](mailto:info@biogol.com)

Tel: 0086-025-68037686

Fax: 0086-025-68035151