

## ATF4 Rabbit monoclonal antibody

Catalog: BS40308

Host: Rabbit

Reactivity: Human Mouse Rat

### BackGround:

ATF4, an activating transcription factor/cAMP-response element-binding protein family member, functions in the PERK and eIF2 $\alpha$  ER stress responsive pathway. ER stress represses the translation of the majority of mRNAs, but selectively stimulates the translation of certain mRNAs including that of ATF-4. Induced expression of ATF-4 increases the expression of genes critical for the recovery from ER stress.

### Product:

Rabbit IgG, 1mg/ml in PBS with 0.02% sodium azide, 50% glycerol, pH7.2.

### Molecular Weight:

50kDa

### Swiss-Prot:

P18848

### Purification&Purity:

Affinity-chromatography

### Applications:

WB 1:500~1:1000 IHC 1:50~1:200 ICC 1:100~1:500 IP 1:50 FC 1:50

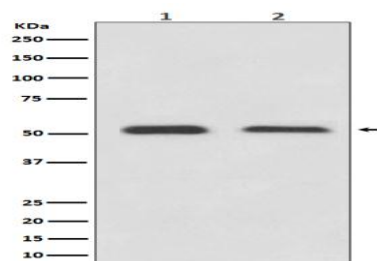
### Storage&Stability:

Store at 4 °C short term. Aliquot and store at -20 °C long term. Avoid freeze-thaw cycles.

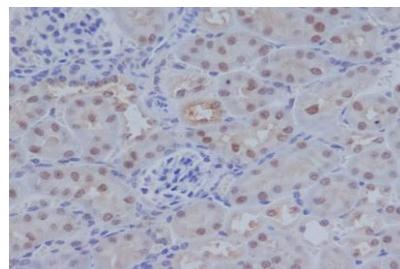
### Specificity:

ATF4 Antibody detects endogenous levels of ATF4

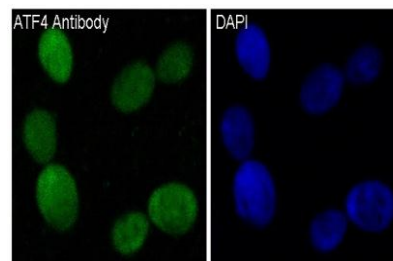
### DATA:



Western blot analysis of ATF4 expression in (1) HeLa cell lysate; (2) 3T3 cell lysate.



Immunohistochemical analysis of paraffin-embedded mouse kidney, using ATF4 Antibody.



Immunofluorescent analysis of 293 cells, using ATF4 Antibody.

### Note:

For research use only, not for use in diagnostic procedure.

### Bioworld Technology, Inc.

Add: 1660 South Highway 100, Suite 500 St. Louis Park, MN 55416, USA.

Email: [info@bioworld.com](mailto:info@bioworld.com)

Tel: 6123263284

Fax: 6122933841

### Bioworld technology, co. Ltd.

Add: No 9, weidi road Qixia District Nanjing, 210046, P. R. China.

Email: [info@biogot.com](mailto:info@biogot.com)

Tel: 0086-025-68037686

Fax: 0086-025-68035151