

MEK7 Rabbit monoclonal antibody

Catalog: BS40307

Host: Rabbit

Reactivity: Human Mouse Rat

BackGround:

MKK7 is strongly activated by TNF- α , as well as other environmental stresses, whereas SEK1/MKK4, which activates both p38 and SAPK/JNK pathways, is not activated by TNF- α . Sequence alignment of the activation loop of the MAP kinase kinase family members indicates that Ser271 and Thr275 are potential phosphorylation sites that are crucial for the kinase activity.

Product:

Rabbit IgG, 1mg/ml in PBS with 0.02% sodium azide, 50% glycerol, pH7.2.

Molecular Weight:

47kDa

Swiss-Prot:

O14733

Purification&Purity:

Affinity-chromatography

Applications:

WB 1:1000~1:2000 IHC 1:50~1:200 ICC/IF 1:50~1:200

IP 1:40 FC 1:50

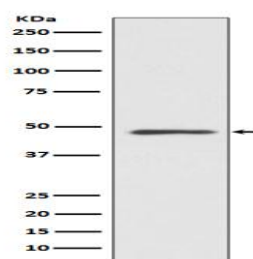
Storage&Stability:

Store at 4 °C short term. Aliquot and store at -20 °C long term. Avoid freeze-thaw cycles.

Specificity:

MEK7 Antibody detects endogenous levels of MEK7

DATA:



Western blot analysis of MEK5 expression in HeLa cell lysate.

Note:

For research use only, not for use in diagnostic procedure.

Bioworld Technology, Inc.

Add: 1660 South Highway 100, Suite 500 St. Louis Park, MN 55416, USA.

Email: info@bioworld.com

Tel: 6123263284

Fax: 6122933841

Bioworld technology, co. Ltd.

Add: No 9, weidi road Qixia District Nanjing, 210046, P. R. China.

Email: info@biogot.com

Tel: 0086-025-68037686

Fax: 0086-025-68035151