

STAT2 Rabbit monoclonal antibody

Catalog: BS40304

Host: Rabbit

Reactivity: Human Mouse Rat

BackGround:

STAT2 (113-kDa), originally purified from the nuclei of alpha-interferon-treated cells, is critical to the transcriptional responses induced by type I interferons, IFN-alpha/beta. Stat2 is rapidly activated by phosphorylation at Tyr690 in response to stimulation by IFN-alpha/beta via associations with receptor-bound Jak kinases

Product:

Rabbit IgG, 1mg/ml in PBS with 0.02% sodium azide, 50% glycerol, pH7.2.

Molecular Weight:

97kDa

Swiss-Prot:

P52630

Purification&Purity:

Affinity-chromatography

Applications:

WB 1:1000~1:2000 IHC 1:50~1:200 ICC/IF 1:50~1:200

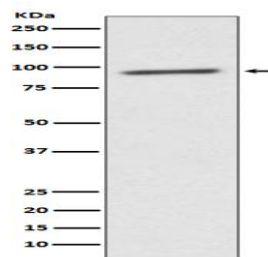
Storage&Stability:

Store at 4 °C short term. Aliquot and store at -20 °C long term. Avoid freeze-thaw cycles.

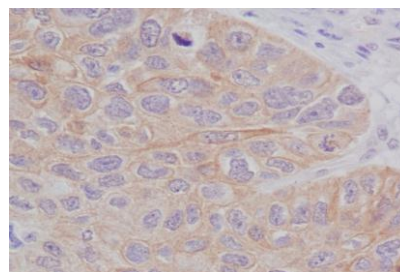
Specificity:

STAT2 Antibody detects endogenous levels of STAT2

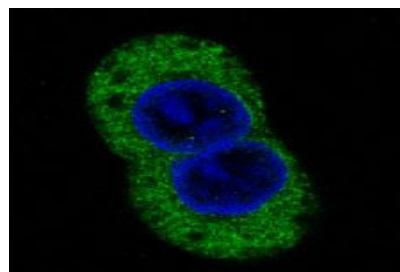
DATA:



Western blot analysis of STAT2 expression in K562 cell lysate.



Immunohistochemical analysis of paraffin-embedded human lung cancer, using STAT2 Antibody.



Immunofluorescent analysis of A431 cells, using STAT2 Antibody.

Note:

For research use only, not for use in diagnostic procedure.

Bioworld Technology, Inc.

Add: 1660 South Highway 100, Suite 500 St. Louis Park, MN 55416, USA.

Email: info@bioworld.com

Tel: 6123263284

Fax: 6122933841

Bioworld technology, co. Ltd.

Add: No 9, weidi road Qixia District Nanjing, 210046, P. R. China.

Email: info@biogol.com

Tel: 0086-025-68037686

Fax: 0086-025-68035151