

Cyclin D3 Rabbit monoclonal antibody

Catalog: BS40293

Host: Rabbit

Reactivity: Human Mouse

BackGround:

Regulatory component of the cyclin D3-CDK4 (DC) complex that phosphorylates and inhibits members of the retinoblastoma (RB) protein family including RB1 and regulates the cell-cycle during G1/S transition.

Product:

Rabbit IgG, 1mg/ml in PBS with 0.02% sodium azide, 50% glycerol, pH7.2.

Molecular Weight:

32kDa

Swiss-Prot:

P30281

Purification&Purity:

Affinity-chromatography

Applications:

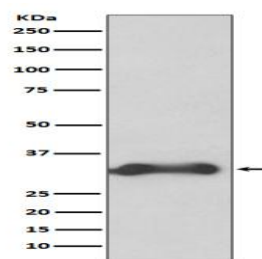
WB 1:1000~1:2000 ICC/IF 1:50~1:200 FC 1:30

Storage&Stability:

Store at 4 °C short term. Aliquot and store at -20 °C long term. Avoid freeze-thaw cycles.

Specificity:

Cyclin D3 Antibody detects endogenous levels of Cyclin D3

DATA:

Western blot analysis of Cyclin D3 expression in K562 cell lysate.

Note:

For research use only, not for use in diagnostic procedure.

Bioworld Technology, Inc.

Add: 1660 South Highway 100, Suite 500 St. Louis Park, MN 55416, USA.

Email: info@bioworld.com

Tel: 6123263284

Fax: 6122933841

Bioworld technology, co. Ltd.

Add: No 9, weidi road Qixia District Nanjing, 210046, P. R. China.

Email: info@biogol.com

Tel: 0086-025-68037686

Fax: 0086-025-68035151