

Insulin Receptor Rabbit monoclonal antibody

Catalog: BS40279

Host: Rabbit

Reactivity: Human Rat

BackGround:

Insulin Receptor is a transmembrane receptor tyrosine kinase that is widely expressed in many cell lines and cell types within fetal and postnatal tissues; Insulin binding to IR induces phosphorylation of intracellular tyrosine kinase domains and recruitment of multiple SH2 and SH3 domain-containing intracellular proteins that serve as signaling intermediates for pleiotropic effects of insulin.

Product:

Rabbit IgG, 1mg/ml in PBS with 0.02% sodium azide, 50% glycerol, pH7.2.

Molecular Weight:

95kDa

Swiss-Prot:

P06213

Purification&Purity:

Affinity-chromatography

Applications:

WB 1:1000~1:2000 ICC/IF 1:50~1:200

Storage&Stability:

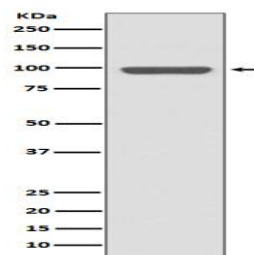
Store at 4 °C short term. Aliquot and store at -20 °C long term. Avoid freeze-thaw cycles.

Specificity:

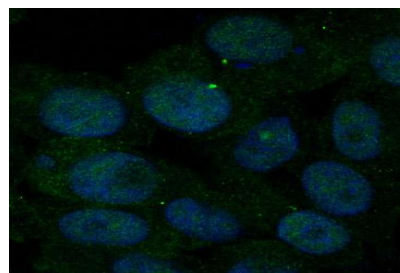
Insulin Receptor Antibody detects endogenous levels of

Insulin Receptor

DATA:



Western blot analysis of Insulin Receptor expression in HeLa cell lysate.



Immunofluorescent analysis of BxPC-3 cells, using Insulin Receptor Antibody.

Note:

For research use only, not for use in diagnostic procedure.

Bioworld Technology, Inc.

Add: 1660 South Highway 100, Suite 500 St. Louis Park, MN 55416, USA.

Email: info@bioworld.com

Tel: 6123263284

Fax: 6122933841

Bioworld technology, co. Ltd.

Add: No 9, weidi road Qixia District Nanjing, 210046, P. R. China.

Email: info@biogot.com

Tel: 0086-025-68037686

Fax: 0086-025-68035151