

Angiotensinogen Rabbit monoclonal antibody

Catalog: BS40278

Host: Rabbit

Reactivity: Human

BackGround:

Angiotensin is formed from a precursor, angiotensinogen, which is produced by the liver and found in the α -globulin fraction of plasma. Angiotensin stimulation through AT1 has been shown to activate the JAK/Stat pathway involving a direct interaction between JAK2 and AT1 as demonstrated by co-immunoprecipitation.

Product:

Rabbit IgG, 1mg/ml in PBS with 0.02% sodium azide, 50% glycerol, pH7.2.

Molecular Weight:

53kDa

Swiss-Prot:

P01019

Purification&Purity:

Affinity-chromatography

Applications:

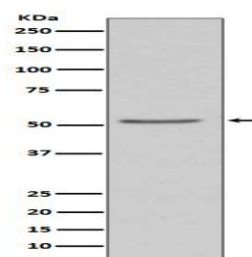
WB 1:1000~1:2000 ICC/IF 1:50~1:200 IP 1:50

Storage&Stability:

Store at 4 °C short term. Aliquot and store at -20 °C long term. Avoid freeze-thaw cycles.

Specificity:

Angiotensinogen Antibody detects endogenous levels of Angiotensinogen

DATA:

Western blot analysis of Angiotensinogen expression in 293T cell lysate.

Note:

For research use only, not for use in diagnostic procedure.

Bioworld Technology, Inc.

Add: 1660 South Highway 100, Suite 500 St. Louis Park,
MN 55416, USA.

Email: info@bioworld.com

Tel: 6123263284

Fax: 6122933841

Bioworld technology, co. Ltd.

Add: No 9, weidi road Qixia District Nanjing, 210046,
P. R. China.

Email: info@biogol.com

Tel: 0086-025-68037686

Fax: 0086-025-68035151