

## RON Rabbit monoclonal antibody

Catalog: BS40276

Host: Rabbit

Reactivity: Human

### BackGround:

Ron is initially synthesized in the cells as a single-chain, pro-Ron precursor that is cleaved into the two active chains. RON signaling activates the wound healing response by promoting epithelial cell migration, proliferation as well as survival at the wound site. Plays also a role in the innate immune response by regulating the migration and phagocytic activity of macrophages.

### Product:

Rabbit IgG, 1mg/ml in PBS with 0.02% sodium azide, 50% glycerol, pH7.2.

### Molecular Weight:

185kDa

### Swiss-Prot:

Q04912

### Purification&Purity:

Affinity-chromatography

### Applications:

WB 1:1000~1:2000 IHC 1:50~1:200 ICC/IF 1:50~1:200

IP 1:30 FC 1:30

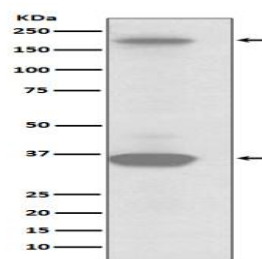
### Storage&Stability:

Store at 4 °C short term. Aliquot and store at -20 °C long term. Avoid freeze-thaw cycles.

### Specificity:

RON Antibody detects endogenous levels of RON

### DATA:



Western blot analysis of RON expression in SKBR3 cell lysate.

### Note:

For research use only, not for use in diagnostic procedure.

### Bioworld Technology, Inc.

Add: 1660 South Highway 100, Suite 500 St. Louis Park, MN 55416, USA.

Email: [info@bioworld.com](mailto:info@bioworld.com)

Tel: 6123263284

Fax: 6122933841

### Bioworld technology, co. Ltd.

Add: No 9, weidi road Qixia District Nanjing, 210046, P. R. China.

Email: [info@biogol.com](mailto:info@biogol.com)

Tel: 0086-025-68037686

Fax: 0086-025-68035151