

BRG1 Rabbit monoclonal antibody

Catalog: BS40273

Host: Rabbit

Reactivity: Human Mouse Rat

BackGround:

ATP-dependent chromatin remodeling complexes play an essential role in the regulation of various nuclear processes, such as gene expression, DNA replication, and repair. Acts as a corepressor of ZEB1 to regulate E-cadherin transcription and is required for induction of epithelial-mesenchymal transition (EMT) by ZEB1.

Product:

Rabbit IgG, 1mg/ml in PBS with 0.02% sodium azide, 50% glycerol, pH7.2.

Molecular Weight:

185kDa

Swiss-Prot:

P51532

Purification&Purity:

Affinity-chromatography

Applications:

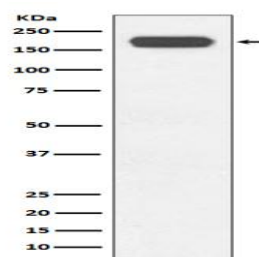
WB 1:5000~1:20000 IHC 1:50~1:200 ICC/IF 1:50~1:200
IP 1:50 ChIP

Storage&Stability:

Store at 4 °C short term. Aliquot and store at -20 °C long term. Avoid freeze-thaw cycles.

Specificity:

BRG1 Antibody detects endogenous levels of BRG1

DATA:

Western blot analysis of BRG1 expression in HeLa cell lysate.

Note:

For research use only, not for use in diagnostic procedure.

Bioworld Technology, Inc.

Add: 1660 South Highway 100, Suite 500 St. Louis Park,
MN 55416, USA.

Email: info@bioworld.com

Tel: 6123263284

Fax: 6122933841

Bioworld technology, co. Ltd.

Add: No 9, weidi road Qixia District Nanjing, 210046,
P. R. China.

Email: info@biogol.com

Tel: 0086-025-68037686

Fax: 0086-025-68035151