

## Phospho-PKC zeta (T560) Rabbit monoclonal antibody

Catalog: BS40268

Host: Rabbit

Reactivity: Human Mouse Rat

### BackGround:

PKC is one of the earliest events in a cascade that controls a variety of cellular responses, including secretion, gene expression, proliferation, and muscle contraction. PKC is activated by diacylglycerol which in turn phosphorylates a range of cellular proteins. PKC also serves as the receptor for phorbol esters, a class of tumor promoters. Subunit of a quaternary complex that plays a central role in epithelial cell polarization.

### Product:

Rabbit IgG, 1mg/ml in PBS with 0.02% sodium azide, 50% glycerol, pH7.2.

### Molecular Weight:

68kDa

### Swiss-Prot:

Q05513

### Purification&Purity:

Affinity-chromatography

### Applications:

WB 1:1000~1:2000 IHC 1:50~1:200

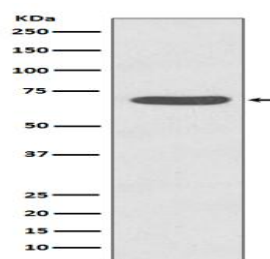
### Storage&Stability:

Store at 4 °C short term. Aliquot and store at -20 °C long term. Avoid freeze-thaw cycles.

### Specificity:

Phospho-PKC zeta (T560) Antibody detects endogenous levels of Phospho-PKC zeta (T560)

### DATA:



Western blot analysis of Phospho-PKC zeta (T560) expression in HeLa cell treated with Calyculin A lysate.

### Note:

For research use only, not for use in diagnostic procedure.

### Bioworld Technology, Inc.

Add: 1660 South Highway 100, Suite 500 St. Louis Park, MN 55416, USA.

Email: [info@bioworld.com](mailto:info@bioworld.com)

Tel: 6123263284

Fax: 6122933841

### Bioworld technology, co. Ltd.

Add: No 9, weidi road Qixia District Nanjing, 210046, P. R. China.

Email: [info@biogol.com](mailto:info@biogol.com)

Tel: 0086-025-68037686

Fax: 0086-025-68035151