

CD38 Rabbit monoclonal antibody

Catalog: BS40254

Host: Rabbit

Reactivity: Human

BackGround:

CD38 is a transmembrane protein involved in several important biological processes, including immune response, insulin secretion, and social behavior. Synthesizes cyclic ADP-ribose, a second messenger for glucose-induced insulin secretion. Also has cADPr hydrolase activity. Also moonlights as a receptor in cells of the immune system.

Product:

Rabbit IgG, 1mg/ml in PBS with 0.02% sodium azide, 50% glycerol, pH7.2.

Molecular Weight:

45kDa

Swiss-Prot:

P28907

Purification&Purity:

Affinity-chromatography

Applications:

WB 1:500~1:2000 IHC 1:100~1:500

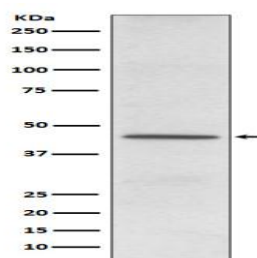
Storage&Stability:

Store at 4 °C short term. Aliquot and store at -20 °C long term. Avoid freeze-thaw cycles.

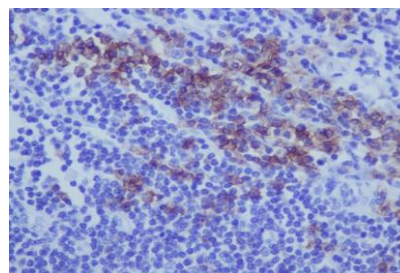
Specificity:

CD38 Antibody detects endogenous levels of CD38

DATA:



Western blot analysis of CD38 expression in HeLa cell lysate.



Immunohistochemical analysis of paraffin-embedded human tonsil, using CD38 Antibody.

Note:

For research use only, not for use in diagnostic procedure.

Bioworld Technology, Inc.

Add: 1660 South Highway 100, Suite 500 St. Louis Park, MN 55416, USA.

Email: info@bioworld.com

Tel: 6123263284

Fax: 6122933841

Bioworld technology, co. Ltd.

Add: No 9, weidi road Qixia District Nanjing, 210046, P. R. China.

Email: info@biogot.com

Tel: 0086-025-68037686

Fax: 0086-025-68035151