

Cytokeratin 6 Rabbit monoclonal antibody

Catalog: BS40252

Host: Rabbit

Reactivity: Human

BackGround:

Keratins (cytokeratins) are intermediate filament proteins that are mainly expressed in epithelial cells. Involved in the activation of follicular keratinocytes after wounding, while it does not play a major role in keratinocyte proliferation or migration. Participates in the regulation of epithelial migration by inhibiting the activity of SRC during wound repair.

Product:

Rabbit IgG, 1mg/ml in PBS with 0.02% sodium azide, 50% glycerol, pH7.2.

Molecular Weight:

60kDa

Swiss-Prot:

P02538

Purification&Purity:

Affinity-chromatography

Applications:

WB 1:500~1:2000 IHC 1:50~1:200 ICC/IF 1:50~1:200

Storage&Stability:

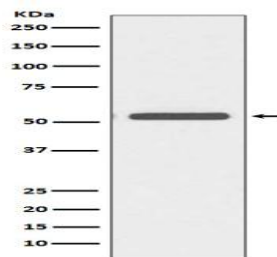
Store at 4 °C short term. Aliquot and store at -20 °C long term. Avoid freeze-thaw cycles.

Specificity:

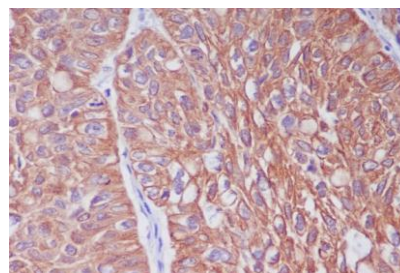
Cytokeratin 6 Antibody detects endogenous levels of Cy-

tokerin 6

DATA:



Western blot analysis of Cytokeratin 6 expression in A431 cell lysate.



Immunohistochemical analysis of paraffin-embedded human lung cancer, using Cytokeratin 6 Antibody.

Note:

For research use only, not for use in diagnostic procedure.

Bioworld Technology, Inc.

Add: 1660 South Highway 100, Suite 500 St. Louis Park, MN 55416, USA.

Email: info@bioworld.com

Tel: 6123263284

Fax: 6122933841

Bioworld technology, co. Ltd.

Add: No 9, weidi road Qixia District Nanjing, 210046, P. R. China.

Email: info@biogot.com

Tel: 0086-025-68037686

Fax: 0086-025-68035151