

DKK1 Rabbit monoclonal antibody

Catalog: BS40238

Host: Rabbit

Reactivity: Human Rat

BackGround:

DKK1: dickkopf homolog 1 (*Xenopus laevis*), also known as SK. Entrez Protein NP_036374. DKK1 is a member of the dickkopf family. It is a secreted protein with two cysteine rich regions and is involved in embryonic development through its inhibition of the WNT signaling pathway. Elevated levels of DKK1 in bone marrow plasma and peripheral blood is associated with the presence of osteolytic bone lesions in patients with multiple myeloma.

Product:

Rabbit IgG, 1mg/ml in PBS with 0.02% sodium azide, 50% glycerol, pH7.2.

Molecular Weight:

38kDa

Swiss-Prot:

O94907

Purification&Purity:

Affinity-chromatography

Applications:

WB 1:1000~1:2000 IHC 1:50~1:200 ICC/IF 1:50~1:200
FC 1:50

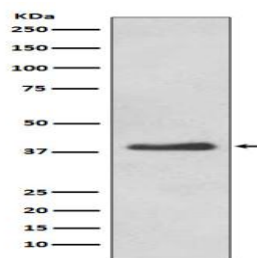
Storage&Stability:

Store at 4 °C short term. Aliquot and store at -20 °C long term. Avoid freeze-thaw cycles.

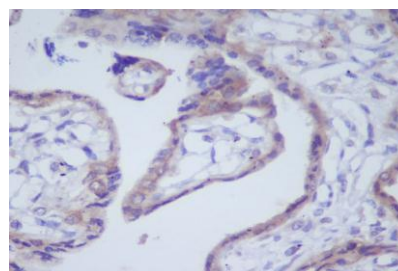
Specificity:

DKK1 Antibody detects endogenous levels of DKK1

DATA:



Western blot analysis of DKK1 expression in HeLa cell lysate.



Immunohistochemical analysis of paraffin-embedded human placenta, using DKK1 Antibody.

Note:

For research use only, not for use in diagnostic procedure.

Bioworld Technology, Inc.

Add: 1660 South Highway 100, Suite 500 St. Louis Park, MN 55416, USA.

Email: info@bioworld.com

Tel: 6123263284

Fax: 6122933841

Bioworld technology, co. Ltd.

Add: No 9, weidi road Qixia District Nanjing, 210046, P. R. China.

Email: info@biogot.com

Tel: 0086-025-68037686

Fax: 0086-025-68035151