

ABCF1 Rabbit monoclonal antibody

Catalog: BS40234

Host: Rabbit

Reactivity: Human Rat

BackGround:

ABCF1 May function in mRNA translation. Belongs to the ABC transporter superfamily. ABCF family. EF3 sub-family. Induced by TNF (in cultured synoviocytes). Interacts with eukaryotic initiation factor 2 (eIF2). Associates with the ribosomes. 2 isoforms of the human protein are produced by alternative splicing. Note: This description may include information from UniProtKB.

Product:

Rabbit IgG, 1mg/ml in PBS with 0.02% sodium azide, 50% glycerol, pH7.2.

Molecular Weight:

96kDa

Swiss-Prot:

Q8NE71

Purification&Purity:

Affinity-chromatography

Applications:

WB 1:500~1:2000 IHC 1:50~1:100 ICC/IF 1:50~1:100

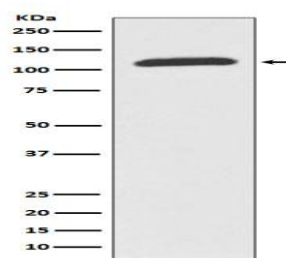
Storage&Stability:

Store at 4 °C short term. Aliquot and store at -20 °C long term. Avoid freeze-thaw cycles.

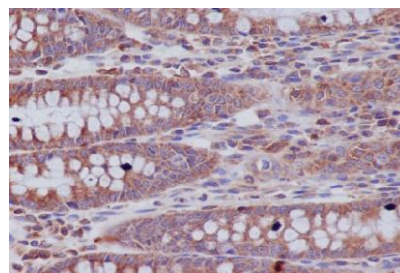
Specificity:

ABCF1 Antibody detects endogenous levels of ABCF1

DATA:



Western blot analysis of ABCF1 expression in K562 cell lysate.



Immunohistochemical analysis of paraffin-embedded human colon, using ABCF1 Antibody.

Note:

For research use only, not for use in diagnostic procedure.

Bioworld Technology, Inc.

Add: 1660 South Highway 100, Suite 500 St. Louis Park, MN 55416, USA.

Email: info@bioworld.com

Tel: 6123263284

Fax: 6122933841

Bioworld technology, co. Ltd.

Add: No 9, weidi road Qixia District Nanjing, 210046, P. R. China.

Email: info@biogot.com

Tel: 0086-025-68037686

Fax: 0086-025-68035151