

MyD88 Rabbit monoclonal antibody

Catalog: BS40219

Host: Rabbit

Reactivity: Human

BackGround:

Members of the Toll-like receptor (TLR) family, named for the closely related Toll receptor in *Drosophila*, play a pivotal role in innate immune responses. TLRs recognize conserved motifs found in various pathogens and mediate defense responses. Triggering of the TLR pathway leads to the activation of NF- κ B and subsequent regulation of immune and inflammatory genes.

Product:

Rabbit IgG, 1mg/ml in PBS with 0.02% sodium azide, 50% glycerol, pH7.2.

Molecular Weight:

33kDa

Swiss-Prot:

Q99836

Purification&Purity:

Affinity-chromatography

Applications:

WB 1:1000~1:2000 IHC 1:50~1:200 ICC/IF 1:50~1:200
FC 1:100

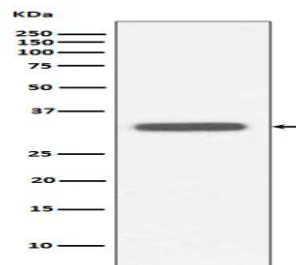
Storage&Stability:

Store at 4 °C short term. Aliquot and store at -20 °C long term. Avoid freeze-thaw cycles.

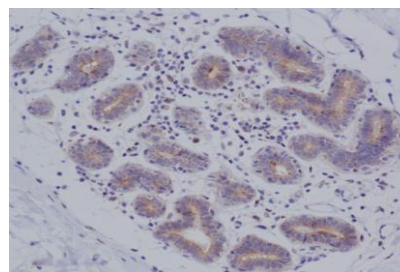
Specificity:

MyD88 Antibody detects endogenous levels of MyD88

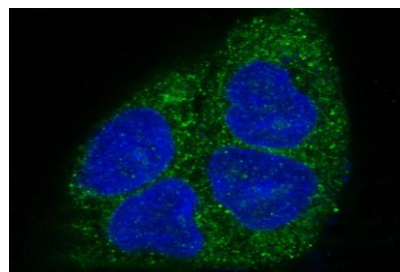
DATA:



Western blot analysis of MyD88 expression in Raji cell lysate.



Immunohistochemical analysis of paraffin-embedded human breast cancer, using MyD88 Antibody.



Immunofluorescent analysis of A549 cells, using MyD88 Antibody.

Note:

For research use only, not for use in diagnostic procedure.

Bioworld Technology, Inc.

Add: 1660 South Highway 100, Suite 500 St. Louis Park,
MN 55416, USA.

Email: info@bioworld.com

Tel: 6123263284

Fax: 6122933841

Bioworld technology, co. Ltd.

Add: No 9, weidi road Qixia District Nanjing, 210046,
P. R. China.

Email: info@biogot.com

Tel: 0086-025-68037686

Fax: 0086-025-68035151