

## RALBP1 Rabbit monoclonal antibody

Catalog: BS40214

Host: Rabbit

Reactivity: Human Mouse Rat

### BackGround:

RalBP1 interacts with RalA and the endocytosis protein REPS2 (POB1) through its carboxy-terminal Ral binding domain. RalBP1 has an intrinsic GTPase activating function and interacts with Cdc42 through its centrally located Rho-GAP domain. A protein complex containing RalBP1/POB1/RalA regulates endocytosis of membrane receptors. RalBP1 also functions as a non-ABC transporter that catalyzes the ATP-dependent transport of numerous xenobiotics, including glutathione conjugates and some chemotherapeutic agents.

### Product:

Rabbit IgG, 1mg/ml in PBS with 0.02% sodium azide, 50% glycerol, pH7.2.

### Molecular Weight:

95kDa

### Swiss-Prot:

Q15311

### Purification&Purity:

Affinity-chromatography

### Applications:

WB 1:5000~1:10000 IHC 1:50~1:200 FC 1:50

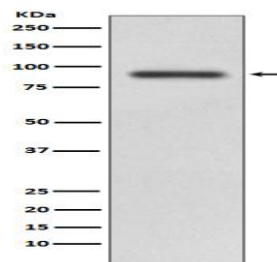
### Storage&Stability:

Store at 4 °C short term. Aliquot and store at -20 °C long term. Avoid freeze-thaw cycles.

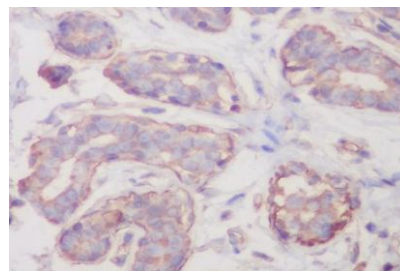
### Specificity:

RALBP1 Antibody detects endogenous levels of RALBP1

### DATA:



Western blot analysis of RALBP1 expression in HeLa cell lysate.



Immunohistochemical analysis of paraffin-embedded human breast, using RALBP1 Antibody.

### Note:

For research use only, not for use in diagnostic procedure.

### Bioworld Technology, Inc.

Add: 1660 South Highway 100, Suite 500 St. Louis Park, MN 55416, USA.

Email: [info@bioworld.com](mailto:info@bioworld.com)

Tel: 6123263284

Fax: 6122933841

### Bioworld technology, co. Ltd.

Add: No 9, weidi road Qixia District Nanjing, 210046, P. R. China.

Email: [info@biogot.com](mailto:info@biogot.com)

Tel: 0086-025-68037686

Fax: 0086-025-68035151