

Phospho-PDGF Receptor beta (Y740) Rabbit monoclonal anti-body

Catalog: BS40212

Host: Rabbit

Reactivity: Mouse Rat

BackGround:

This gene encodes a cell surface tyrosine kinase receptor for members of the platelet-derived growth factor family. These growth factors are mitogens for cells of mesenchymal origin. The identity of the growth factor bound to a receptor monomer determines whether the functional receptor is a homodimer or a heterodimer, composed of both platelet-derived growth factor receptor alpha and beta polypeptides.

Product:

Rabbit IgG, 1mg/ml in PBS with 0.02% sodium azide, 50% glycerol, pH7.2.

Molecular Weight:

190kDa

Swiss-Prot:

P09619

Purification&Purity:

Affinity-chromatography

Applications:

WB 1:1000~1:2000 ICC/IF 1:50~1:200

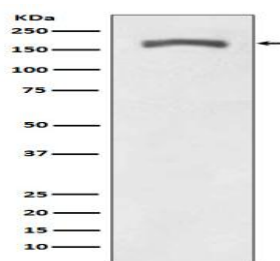
Storage&Stability:

Store at 4 °C short term. Aliquot and store at -20 °C long term. Avoid freeze-thaw cycles.

Specificity:

Phospho-PDGF Receptor beta (Y740) Antibody detects endogenous levels of Phospho-PDGF Receptor beta (Y740)

DATA:



Western blot analysis of Phospho-PDGF Receptor beta (Y740) expression in NIH 3T3 treated with PDGF.

Note:

For research use only, not for use in diagnostic procedure.

Bioworld Technology, Inc.

Add: 1660 South Highway 100, Suite 500 St. Louis Park, MN 55416, USA.

Email: info@bioworld.com

Tel: 6123263284

Fax: 6122933841

Bioworld technology, co. Ltd.

Add: No 9, weidi road Qixia District Nanjing, 210046, P. R. China.

Email: info@biogol.com

Tel: 0086-025-68037686

Fax: 0086-025-68035151