

Phospho-HSL (S853) Rabbit monoclonal antibody

Catalog: BS40209

Host: Rabbit

Reactivity: Human Mouse Rat

BackGround:

hormone sensitive lipase is a lipolytic enzyme of the 'GDXG' family. Plays a rate limiting step in triglyceride lipolysis. In adipose tissue and heart, it primarily hydrolyzes stored triglycerides to free fatty acids, while in steroidogenic tissues, it principally converts cholesteryl esters to free cholesterol for steroid hormone production.

Product:

Rabbit IgG, 1mg/ml in PBS with 0.02% sodium azide, 50% glycerol, pH7.2.

Molecular Weight:

83kDa

Swiss-Prot:

Q05469

Purification&Purity:

Affinity-chromatography

Applications:

WB 1:5000~1:10000

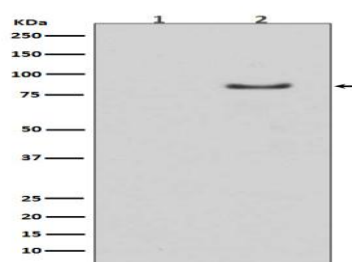
Storage&Stability:

Store at 4 °C short term. Aliquot and store at -20 °C long term. Avoid freeze-thaw cycles.

Specificity:

Phospho-HSL (S853) Antibody detects endogenous levels of Phospho-HSL (S853)

DATA:



Western blot analysis of Phospho-HSL (S853) expression in (1) Mouse muscle lysate; (2) Mouse muscle lysate treated with AP.

Note:

For research use only, not for use in diagnostic procedure.

Bioworld Technology, Inc.

Add: 1660 South Highway 100, Suite 500 St. Louis Park, MN 55416, USA.

Email: info@bioworld.com

Tel: 6123263284

Fax: 6122933841

Bioworld technology, co. Ltd.

Add: No 9, weidi road Qixia District Nanjing, 210046, P. R. China.

Email: info@biogol.com

Tel: 0086-025-68037686

Fax: 0086-025-68035151